

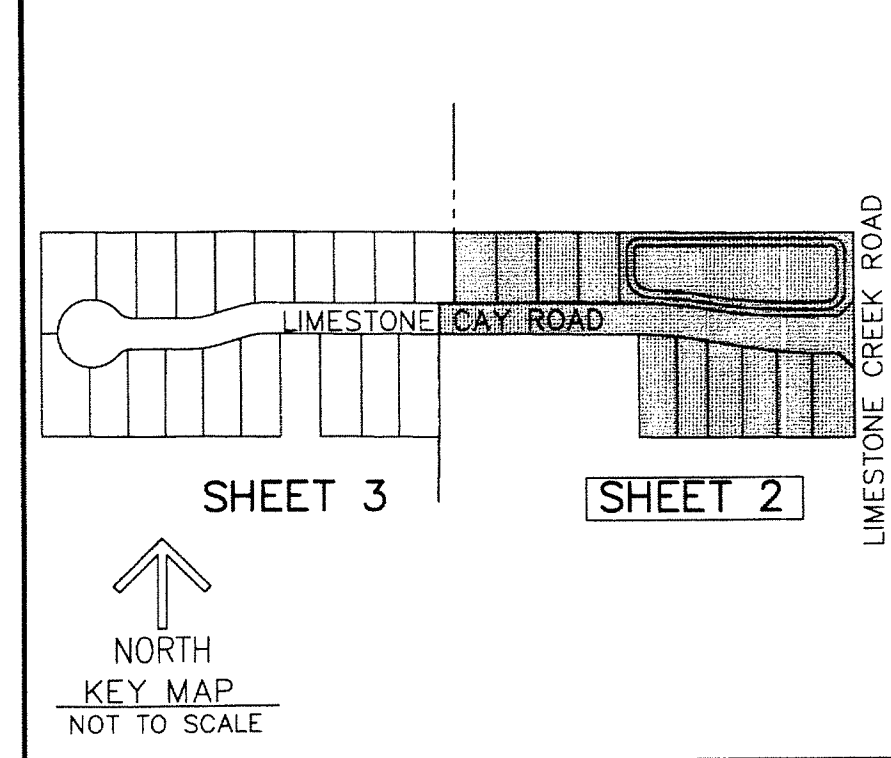
LIMESTONE CAY

A PARCEL OF LAND BEING A PORTION OF THE NORTH HALF OF THE SOUTH HALF OF THE SOUTHEAST QUARTER OF THE SOUTHEAST QUARTER OF SECTION 33, TOWNSHIP 40 SOUTH, RANGE 42 EAST, PALM BEACH COUNTY, FLORIDA.

THIS INSTRUMENT PREPARED BY
DAVID P. LINDLEY
OF
CAULFIELD and WHEELER, INC.
SURVEYORS - ENGINEERS - PLANNERS
7900 GLADES ROAD, SUITE 100
BOCA RATON, FLORIDA 33434 - (561)392-1991
MAY - 2014

LEGEND/ABBREVIATIONS

- CL - CENTERLINE
- Δ - DELTA (CENTRAL ANGLE)
- BE - BUFFER EASEMENT
- DE - DRAINAGE EASEMENT
- F - FACING
- L - ARC LENGTH
- LAE - LIMITED ACCESS EASEMENT
- LB - LICENSED BUSINESS
- LMAE - LAKE MAINTENANCE ACCESS EASEMENT
- LME - LAKE MAINTENANCE EASEMENT
- L.W.D.D. - LAKE WORTH DRAINAGE DISTRICT
- N - NORTHING
- OHME - OVERHANG/MAINTENANCE EASEMENT
- O.R.B. - OFFICIAL RECORD BOOK
- PBCUE - PALM BEACH COUNTY UTILITY EASEMENT
- RAD - RADIUS
- (R) - INDICATES RADIAL LINE
- UE - UTILITY EASEMENT
- - INDICATES "ZERO" SIDE OF LOT LINE
- PRM - DENOTES FOUND PERMANENT REFERENCE MONUMENT
- 4" x 4" x 24" CONCRETE MONUMENT STAMPED LB4431
- PCP - DENOTES PERMANENT CONTROL POINT
- NAIL AND METAL DISK STAMPED "PCP LB3591"
- POB - POINT OF BEGINNING
- PBC - PALM BEACH COUNTY
- PG - PAGE

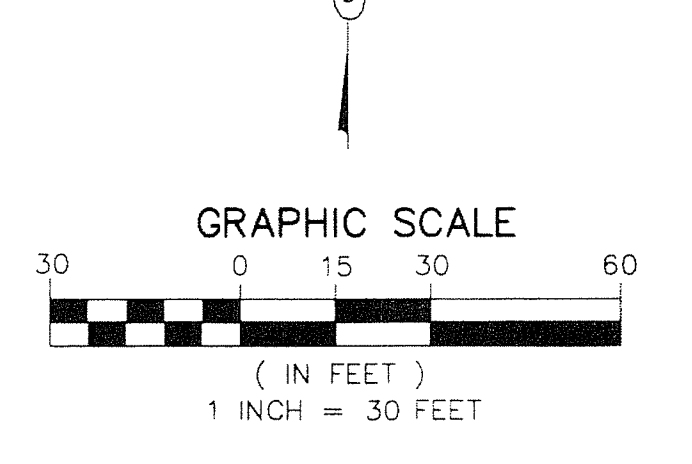


7

STATE OF FLORIDA
COUNTY OF PALM BEACH
THIS PLAT WAS FILED FOR
RECORD AT _____ M.
THIS _____ DAY OF _____
A.D. 201____ AND DULY RECORDED
IN PLAT BOOK _____ ON
PAGES _____ AND _____

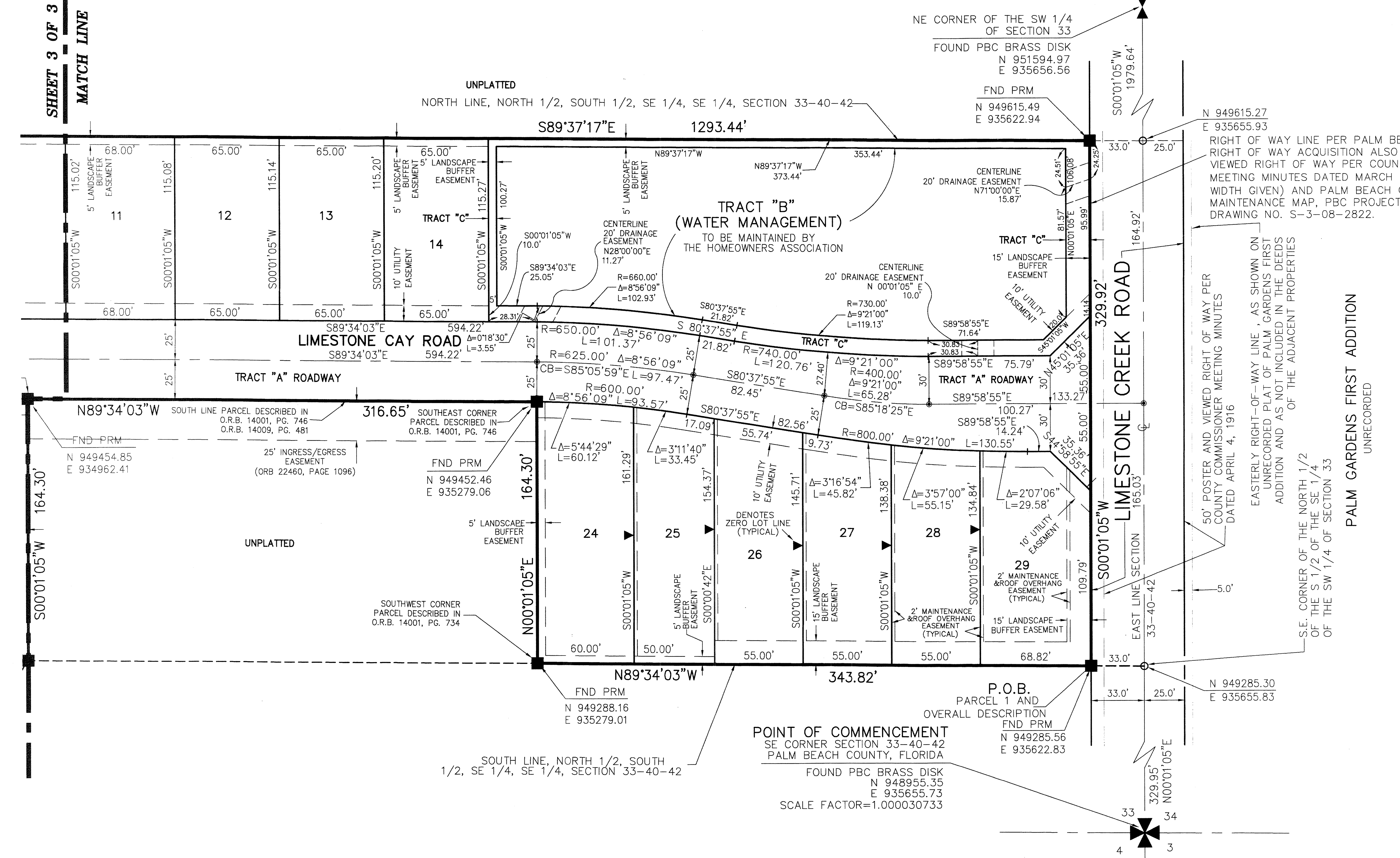
SHARON R. BOCK
CLERK AND COMPTROLLER

BY: _____
DEPUTY CLERK



NOTES
COORDINATES, BEARINGS AND DISTANCES
COORDINATES SHOWN ARE GRID
DATUM = NAD 83 1990 ADJUSTMENT
ZONE = FLORIDA EAST
LINEAR UNIT = US SURVEY FEET
COORDINATE SYSTEM 1983 STATE PLANE
TRANSVERSE MERCATOR PROJECTION
ALL DISTANCES ARE GROUND
SCALE FACTOR = 1.000030733
GROUND DISTANCE X SCALE FACTOR = GRID DISTANCE
BEARINGS AS SHOWN HEREON ARE GRID DATUM,
NAD 83 1990 ADJUSTMENT, FLORIDA EAST ZONE.

SHEET 3 OF 3
MATCH LINE



SHEET 2 OF 3

RIGHT OF WAY LINE PER PALM BEACH COUNTY RIGHT OF WAY ACQUISITION ALSO POSTED AND VIEWED RIGHT OF WAY PER COUNTY COMMISSIONERS MEETING MINUTES DATED MARCH 2, 1920 (NO WIDTH GIVEN) AND PALM BEACH COUNTY MAINTENANCE MAP, PBC PROJECT NO. 2002055, DRAWING NO. S-3-08-2822.

50' POSTER AND VIEWED RIGHT OF WAY PER COUNTY COMMISSIONER MEETING MINUTES DATED APRIL 4, 1916

EASTERLY RIGHT-OF-WAY LINE, AS SHOWN ON UNRECORDED PLAT OF PALM GARDENS FIRST ADDITION AND AS NOT INCLUDED IN THE DEEDS OF THE ADJACENT PROPERTIES

PALM GARDENS FIRST ADDITION
UNRECORDED

S.E. CORNER OF THE NORTH 1/2 OF THE S 1/2 OF THE SE 1/4 OF THE SW 1/4 OF SECTION 33

POINT OF COMMENCEMENT
SE CORNER SECTION 33-40-42
PALM BEACH COUNTY, FLORIDA

FOUND PBC BRASS DISK
N 948955.35
E 935655.73
SCALE FACTOR=1.000030733

P.O.B.
PARCEL 1 AND
OVERALL DESCRIPTION
FND PRM
N 949285.56
E 935622.83

FND PRM
N 949454.85
E 934962.41

FND PRM
N 949452.46
E 935279.06

FND PRM
N 949288.16
E 935279.01

N 949285.30
E 935655.83

